

Update – ASC certification programme

25 August 2022

Aquaculture Stewardship Council
www.asc-aqua.org



ASC Seafood, Global production

Update - ASC certification programme

Agenda

- 1) ASC certification: how does it work?
- 2) Overview of programme improvements
- 3) Revised version ASC Shrimp Standard V1.2
- 4) ASC Chain of Custody module V1.0
- 5) Feed certification: Standard & Requirements for Unit of Certification V1.0
- 6) Assurance Tools (*work in progress*)
- 7) ASC Farm Standard (*work in progress*)

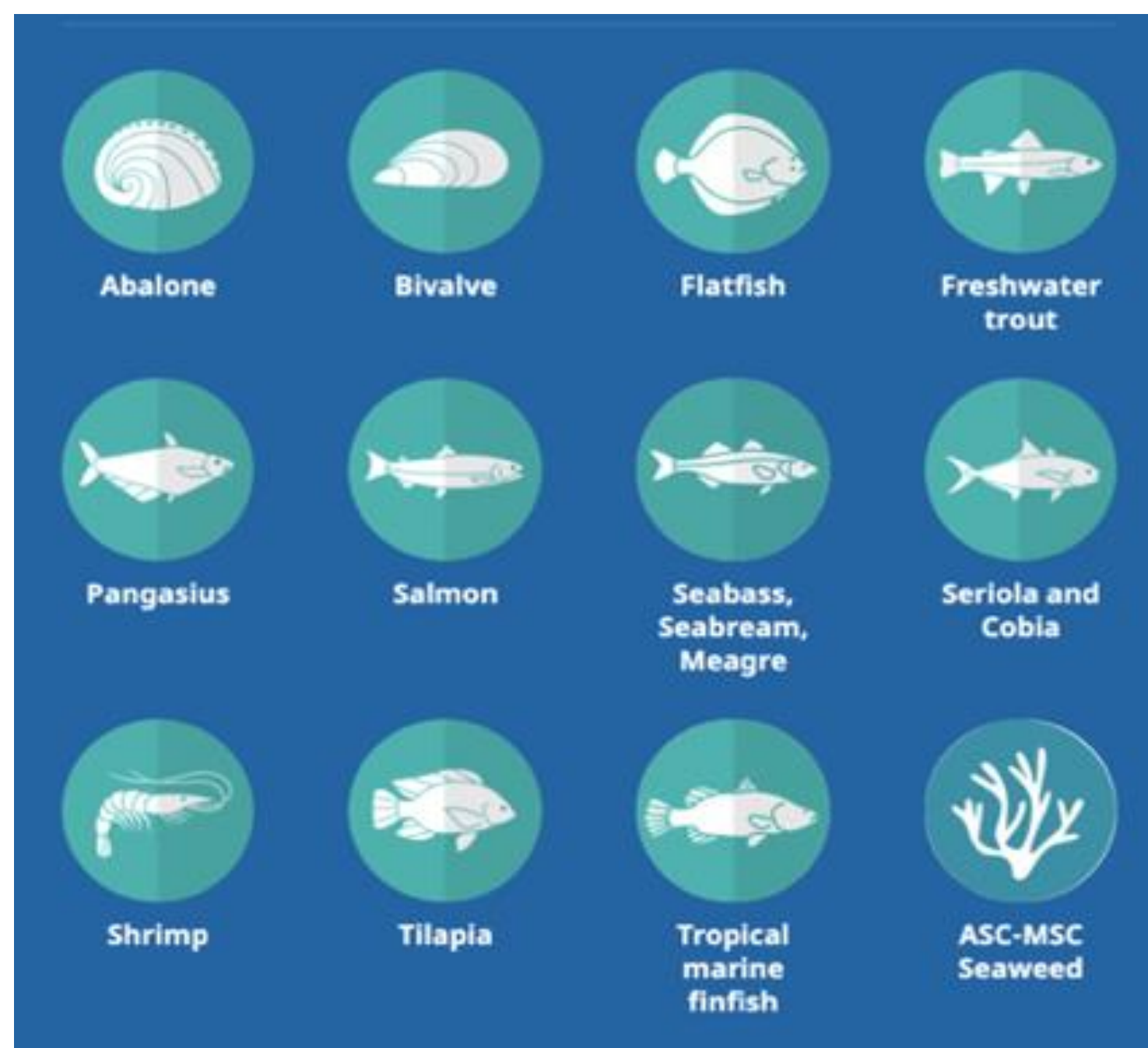
1) ASC certification: how does it work?



Known for our ASC Farm standards

Fastest growing global aqua certification programme

12 Farm Standards (11 + 1)



Environmental, social, community

- Measurable requirements for relevant environmental impacts
- Fully ILO compliant
- Performance indicators setting 'thresholds' (metrics)
- Disclosure of farm performance data

Fastest growing programme

2.1 million
Tons of ASC
certified seafood (farm gate)

1,792
ASC certified farms

22,000
ASC labelled
products worldwide

4,825
Certified companies in
the supply chain

Assurances: supply chain companies, farm and feed mill

Verification provides confirmation - through objective evidence e.g. inspection, documents, cross-checking or other means - that standards or requirements are met



ASC Feed
Standard



12 ASC Farm
Standards



Chain of Custody Certification
Shared with the MSC

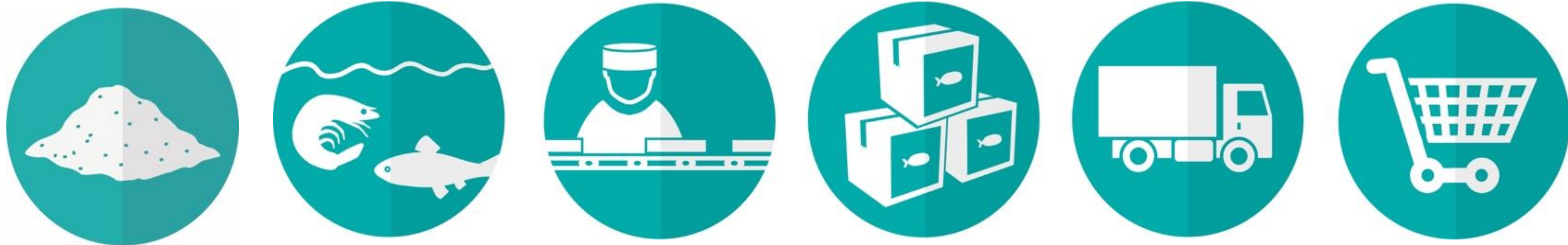


Logo licensing /
product approval



Who is involved?

System of checks and balances



1

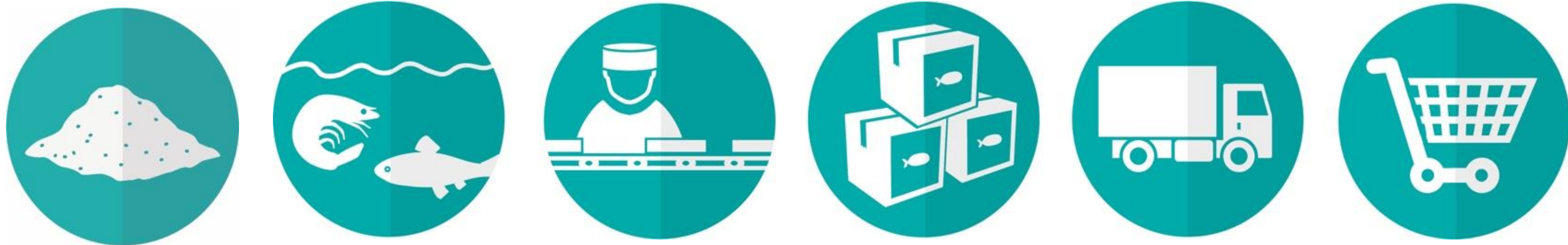


Certification body (CAB) = undertakes certification services for farms/ feed mills/ supply chain companies

Need to meet ASC Certification and Accreditation Requirements
Certification decision is taken by CAB, **independent** from ASC

Who is involved?

System of checks and balances



2

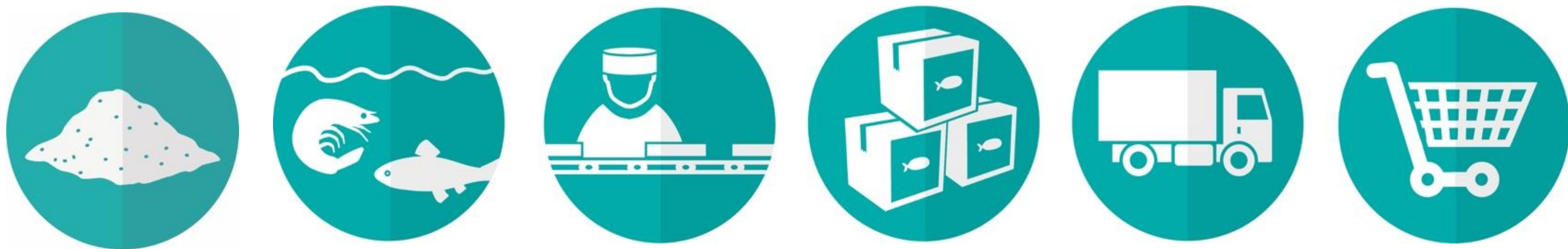
asi
assurance
services
international

ASI = oversees accreditation and performance of certification companies (CABs) and their auditors

Verify globally consistent performance of CABs against ASC Certification and Accreditation Requirements

Who is involved?

System of checks and balances



3

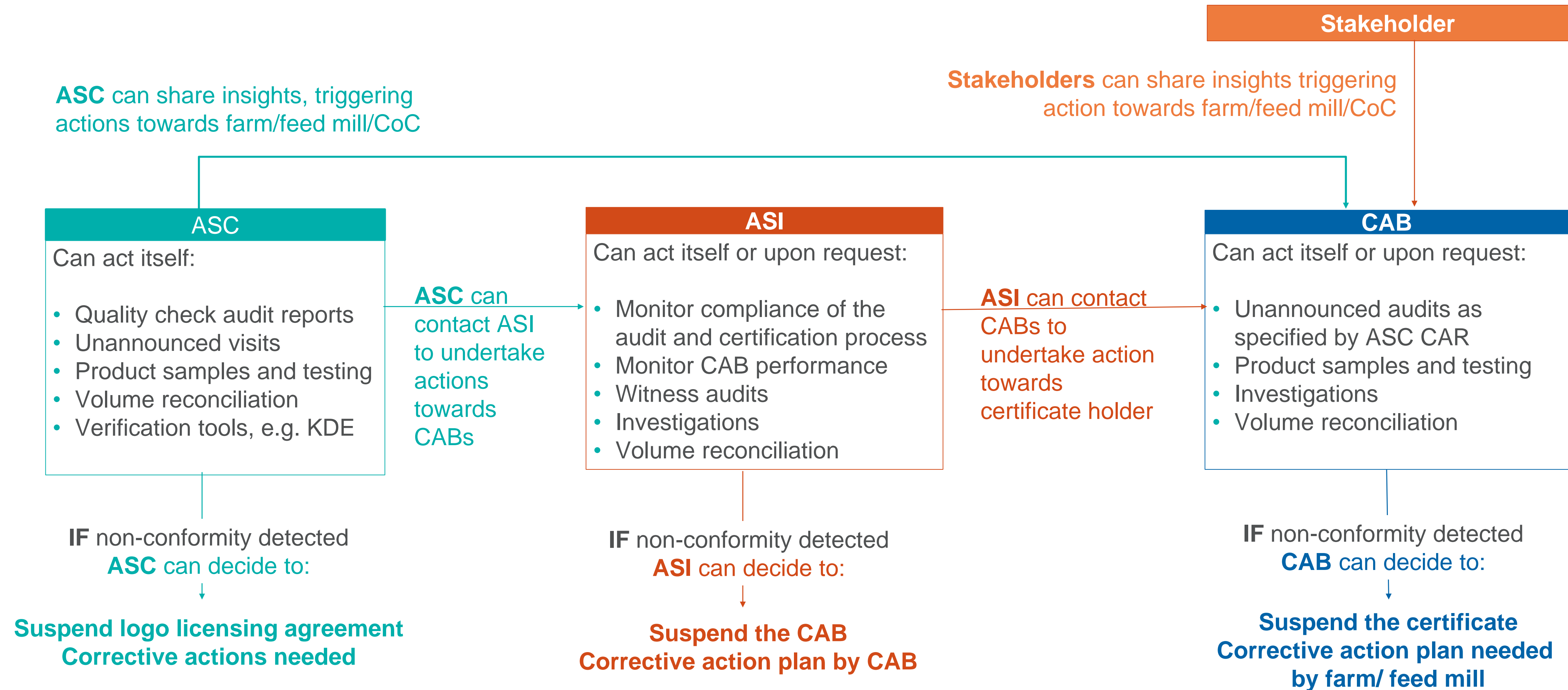


ASC = manages ASC programme

Develops standards, requirements for certification (RUoC), requirements for accreditation of CABs (CAR) & assurance tools
Owns ASC logo; use only approved for products from certified supply chains via logo licensing agreement

Who is involved?

System of checks and balances



ASC certification: 4 critical documents

Feed mill and farm



Farm or Feed
Standard

Requirements for
Unit of Certifi-
cation (RUoC)

Interpretation Guidance

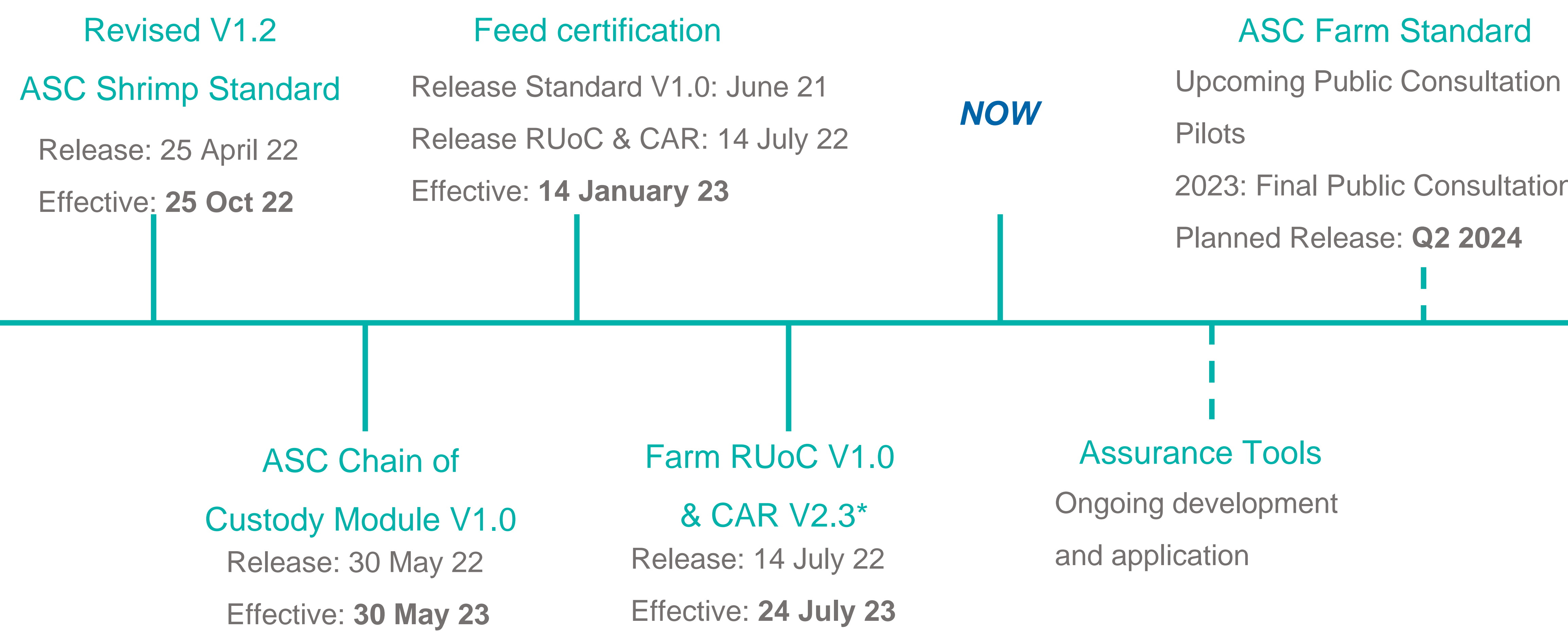


Certification and Accreditation
Requirements (CAR)

2) Overview of programme improvements



Overview of programme improvements



3) Revision ASC Shrimp Standard V1.2

https://www.asc-aqua.org/wp-content/uploads/2022/04/ASC-Shrimp-Standard_v1.2.pdf



Revision ASC Shrimp Standard V1.2

Effective: 25 Oct 2022

Main changes

- Addition of freshwater species (Cherax spp., Procambarus spp., Astacus spp. and Macrobrachium spp.)
- Inclusion of additional indicators and metrics to cover impacts of these freshwater species
- Addition of requirements in V1.2:
 - 2.1.2 site location: checklist for receiving water body
 - 2.6.1, 2.6.2, 2.6.3 water use and allocation
 - 6.4.1 transport criteria for PL: avoiding escapes
 - 7.5.6 water quality monitoring: data submission

Revision ASC Shrimp Standard V1.2

Effective: 25 Oct 2022

Main changes

- Updated of metrics in V1.2:
 - 5.1.3 Survival rates: fed and permanently aerated: > 65% (previously 60%)
 - 7.4.1 Update of Forage Fish Dependency Ratio (FFDR)
 - P. Monodon 1.8:1 (previously 1.9:1)
 - P. Vannamei, 1.3:1 (previously 1.35:1)
 - 7.4.2 b) Protein Retention Efficiency
 - for Penaeus spp. of >30% (increased from 20% to 30%)

4) ASC Chain of Custody Module V 1.0

<https://www.asc-aqua.org/wp-content/uploads/2022/05/ASC-CoC-Module-v1.0-Final-30-May-2022.pdf>

Check-list:

<https://www.asc-aqua.org/wp-content/uploads/2022/06/ASC-CoC-Checklist-Guide.pdf>



ASC Chain of Custody Module V1.0

Effective: 30 May 2023

Chain of Custody



ASC CoC

Module V1.0

Key additions:

- 'Processors' and 'packers' to have a GFSI-recognised food safety scheme or ISO 22000 certification (exemption for small businesses)
- Food fraud vulnerability assessment and intervention plan
- Reporting data to ASC for assurance purposes (KDE traceability tool)
- Ineligibility criteria to prevent organisations who meet the defined criteria from being/remaining certified (e.g. illegal or fraudulent activities)
- For 1st buyers: check if CoC coverage is continuous from farm to first buyer & check product eligibility factors that may apply
- CAB to verify CoC conformance as needed if legal action or LLA suspension arises
- Risk-based approach to increased use of unannounced audits by CABs

ASC Chain of Custody Module V1.0

Effective: 30 May 2023

Why?

- Improve the supply chain integrity of ASC certified products
- Helping address antimicrobial detection,
- Mitigating the risk of seafood fraud and mislabelling
- Increasing opportunities for physical product checks

Implications?

- Maximum 9 extra clauses, of which only 2 always apply at the audit (Fraud & Information to CABs)
- 1 only for CoC with packing or processing in scope (GFSI or ISO 22000)
- 2 apply only for '1st buyers' (risk mixing farm – processing)
- 4 permission for data requests or sampling
- The max additional time for audits is expected to be a few hours, including reporting

5) Feed certification



ASC Feed Standard V1.0:
https://www.asc-aqua.org/wp-content/uploads/2021/06/ASC-Feed-Standard_v1.0_June-2021.pdf

Certification (RUoC V1.0):
<https://www.asc-aqua.org/what-you-can-do/get-certified/get-certified-feed-mill/>

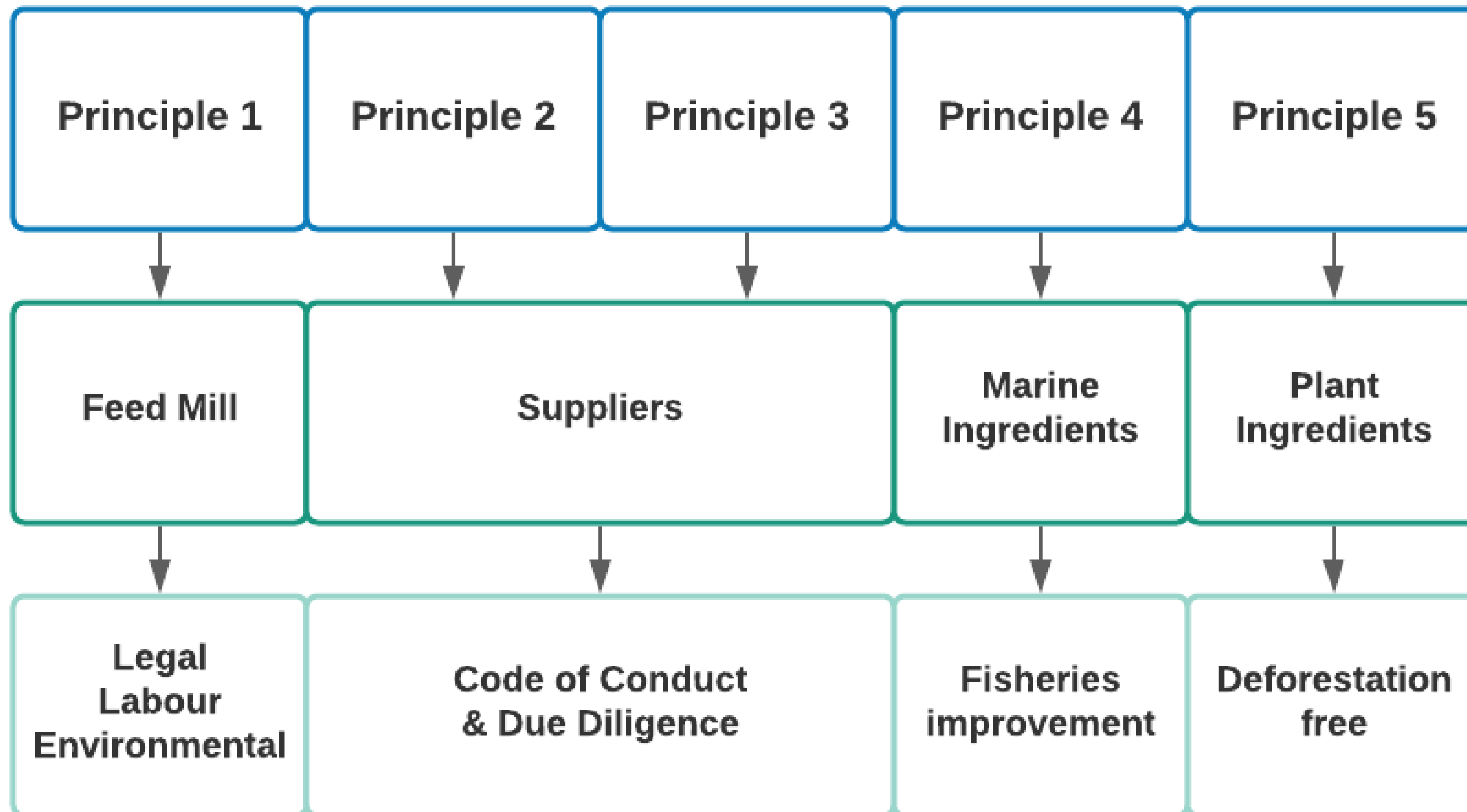


ASC Feed certification



Effective: 14 Jan 2023, transition period of 2 years

5 Principles in ASC Feed standard:



- 1) Management system to implement requirements and legal, labour, community and environmental indicators (waste, water, energy)
- 2) Due diligence for all ingredients (> 1%)
 - Keeping out “worst-of-worst”
 - Driving improvements over time
- 3) Accounting of all in-coming and out-going ingredients and volumes
- 4) Sustainability requirements for marine and plant ingredients (P4 and P5)
 - Increasing sustainability requirements for sourcing over time
- 5) Use of existing schemes & approaches
 - FIPs/ Marin Trust, towards MSC
 - Accountability Framework Initiative

ASC Feed certification

Effective: 14 Jan 2023, transition period of 2 years

Why?

- All feed ingredients – marine and agricultural - have impacts if farmed or harvested unsustainably
- Addressing environmental & social impacts of producing feed
- Holistic approach to tackling the direct and indirect impacts of aquaculture, including feed supplier due diligence
- Focus on feed mill for verification

Implications?

- Auditor training
- Accreditation of CABs by ASI
- Publication: Interpretation Guidance
- From effective date: **24 month transition period** for farms to switch to compliant feed, January 2025

6) Assurance tools

(Work in progress)



Assurance tools

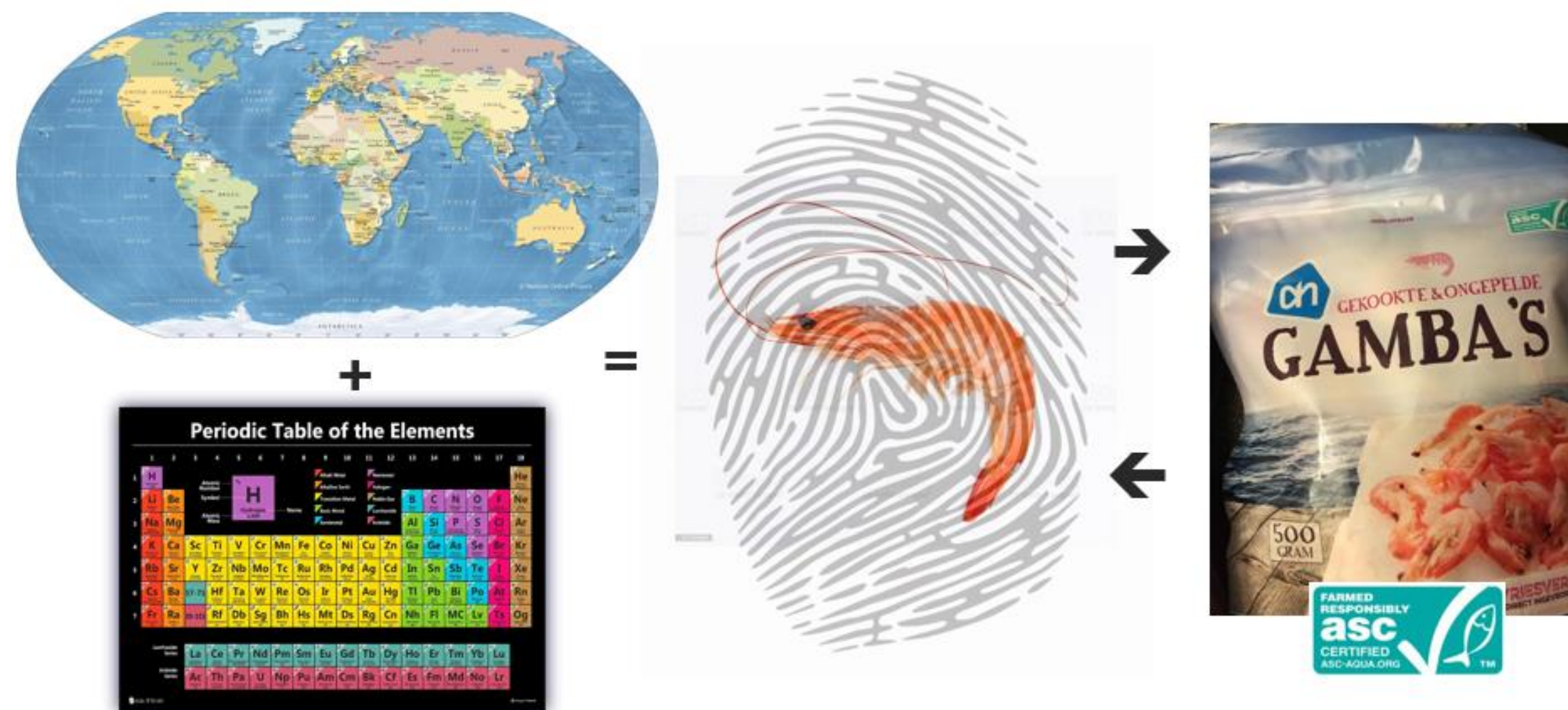
Allows cross-checking and verification farm and in supply chain

Enhancing assurance to increase integrity of ASC logo

The tools are in various stages of development and use. Each tool can be applied as needed to prevent and address product integrity risks of labelled and certified products

- 1) Antibiotics **sampling** and **testing** programme (risk-based)
- 2) **Trace Element Fingerprinting**: origin authentication and verification
- 3) **Key Data Elements**: electronic platform to provide verified traceability of records and data and transparency

Trace Element Fingerprinting



What:



Sampling program using environmental trace elements and advanced modelling to physically ID where specific certified seafood came from

How:



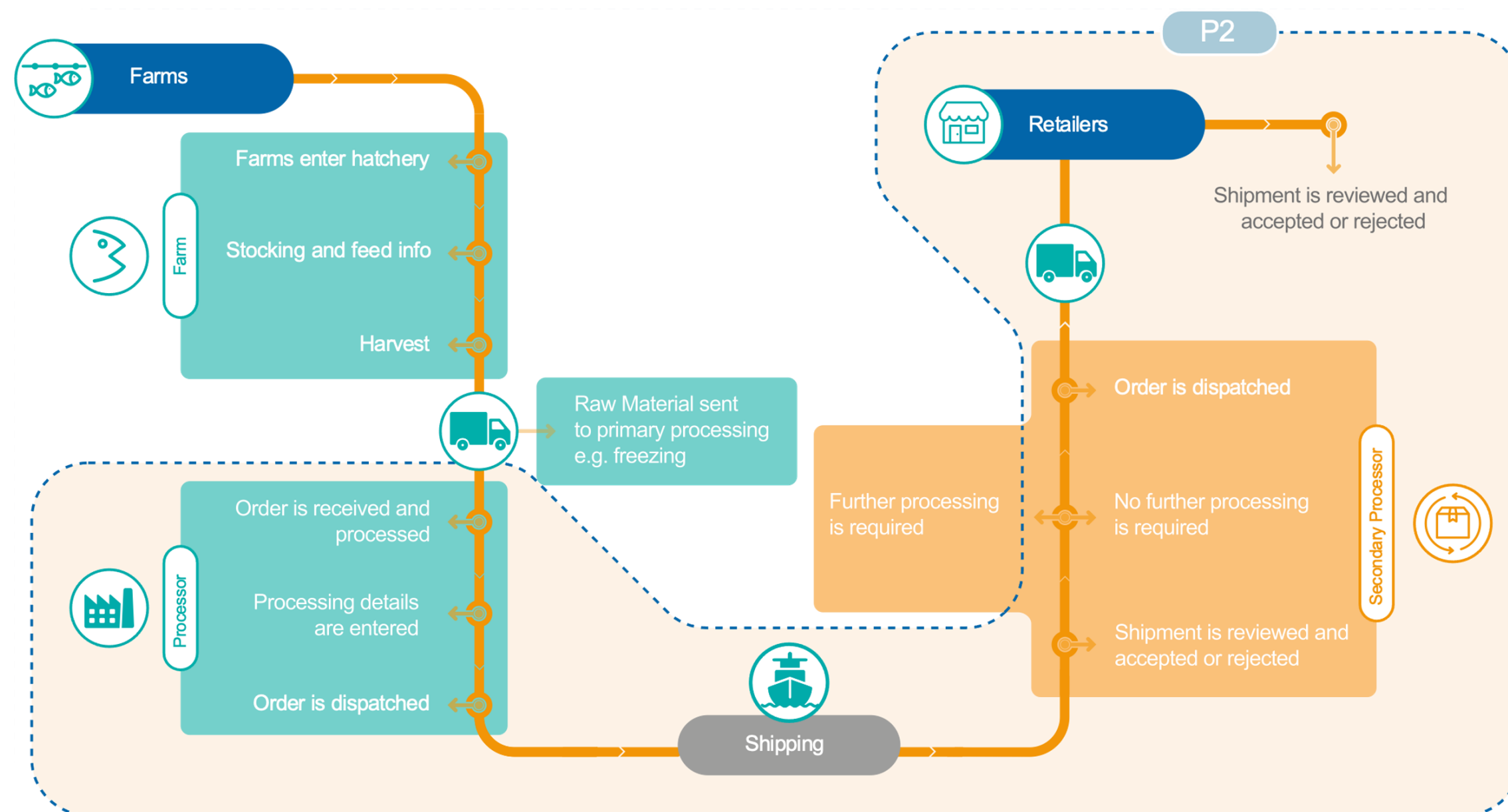
Animals have a trace element profile from the soils, groundwater, surrounding environment and feed of their (region of) origin

Aim:



To improve origin authentication with high accuracy back to farm level and programme assurance

Key Data Elements



What:

Electronic system that allows end-to-end key data and record sharing (respecting privacy and confidentiality)



How:

Collection of key data elements from farm and along the supply chain (via Radix Tree platform)



Aim:

To improve traceability on volume records and data transfer

Assurance tools

Allowing cross-checking and verification

Why?

- Enhancing verification possibilities with innovative approaches to increase assurance
- Complementary to on-site 3rd party audits
- Strengthen value of the ASC logo: integrity of labelled products

Implications?

- Tools are embedded in scheme documents
- Increasing verification efficiency
- Reduced risk of product substitution, volume inflation and data/ record modification
- Increased market trust in integrity and traceability of ASC labelled products

7) ASC Farm Standard



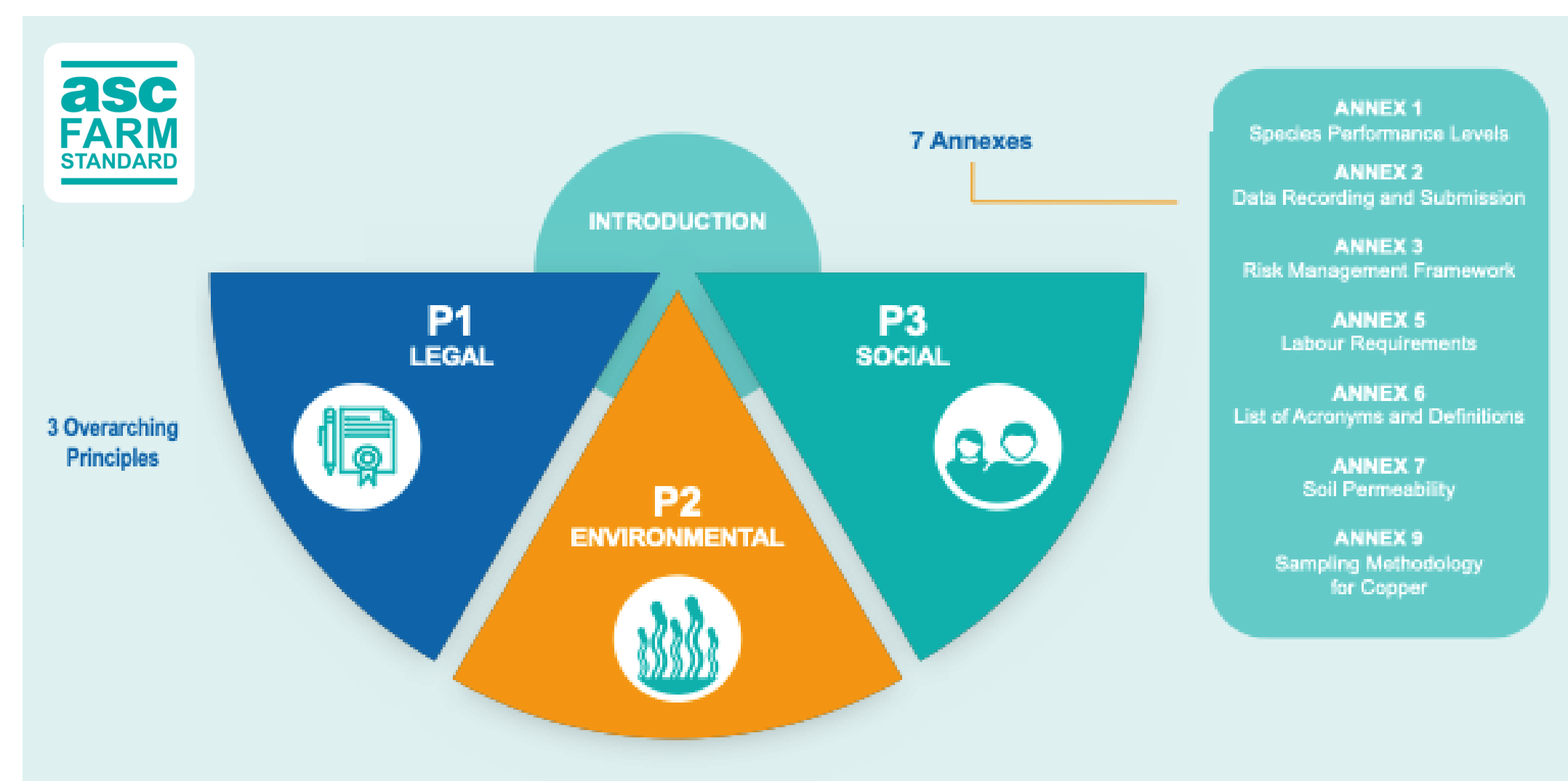
(Work in progress)



ASC Farm standard

Work in progress, release planned for Q2 2024

11 ASC species specific standard into 1



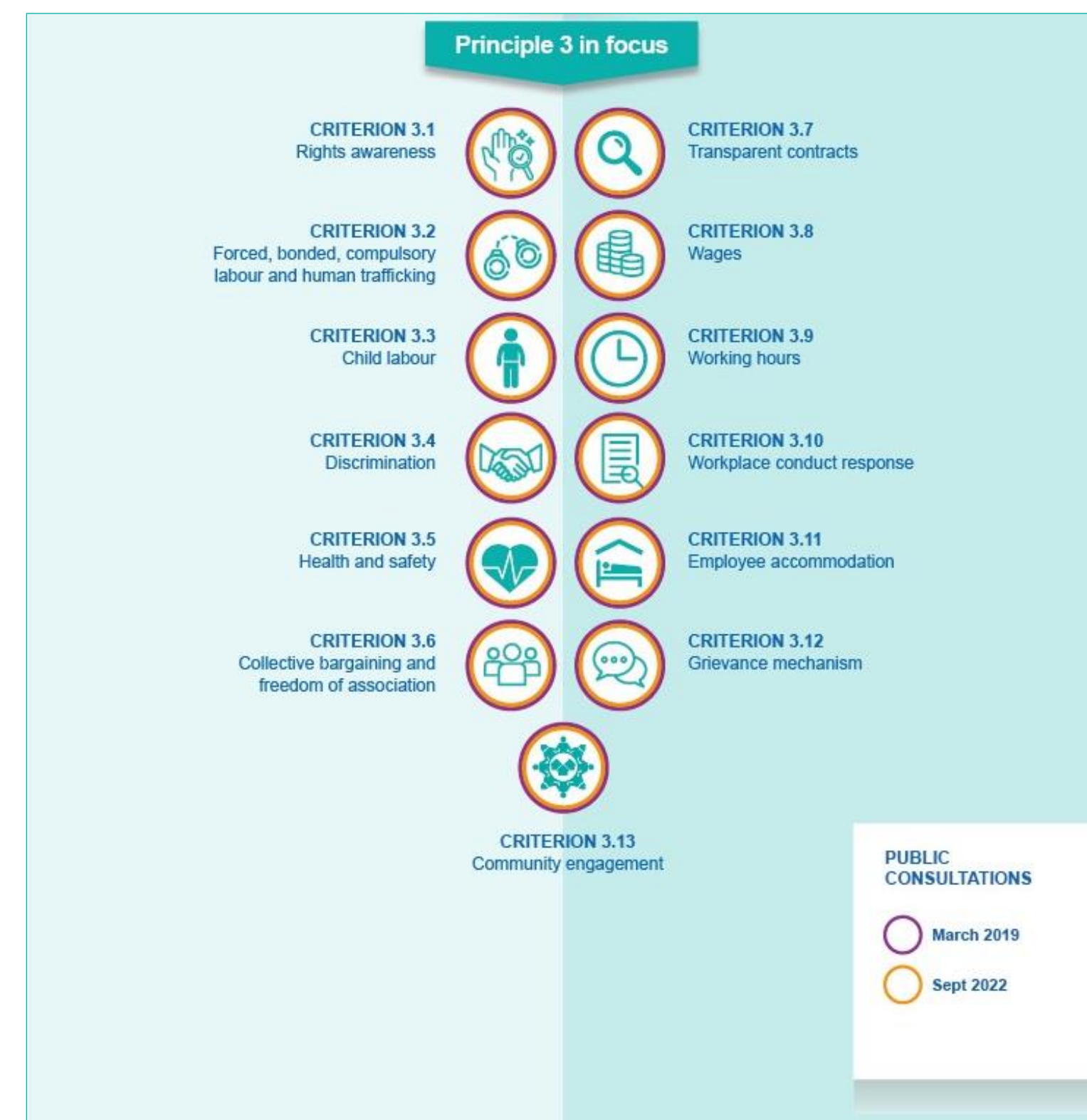
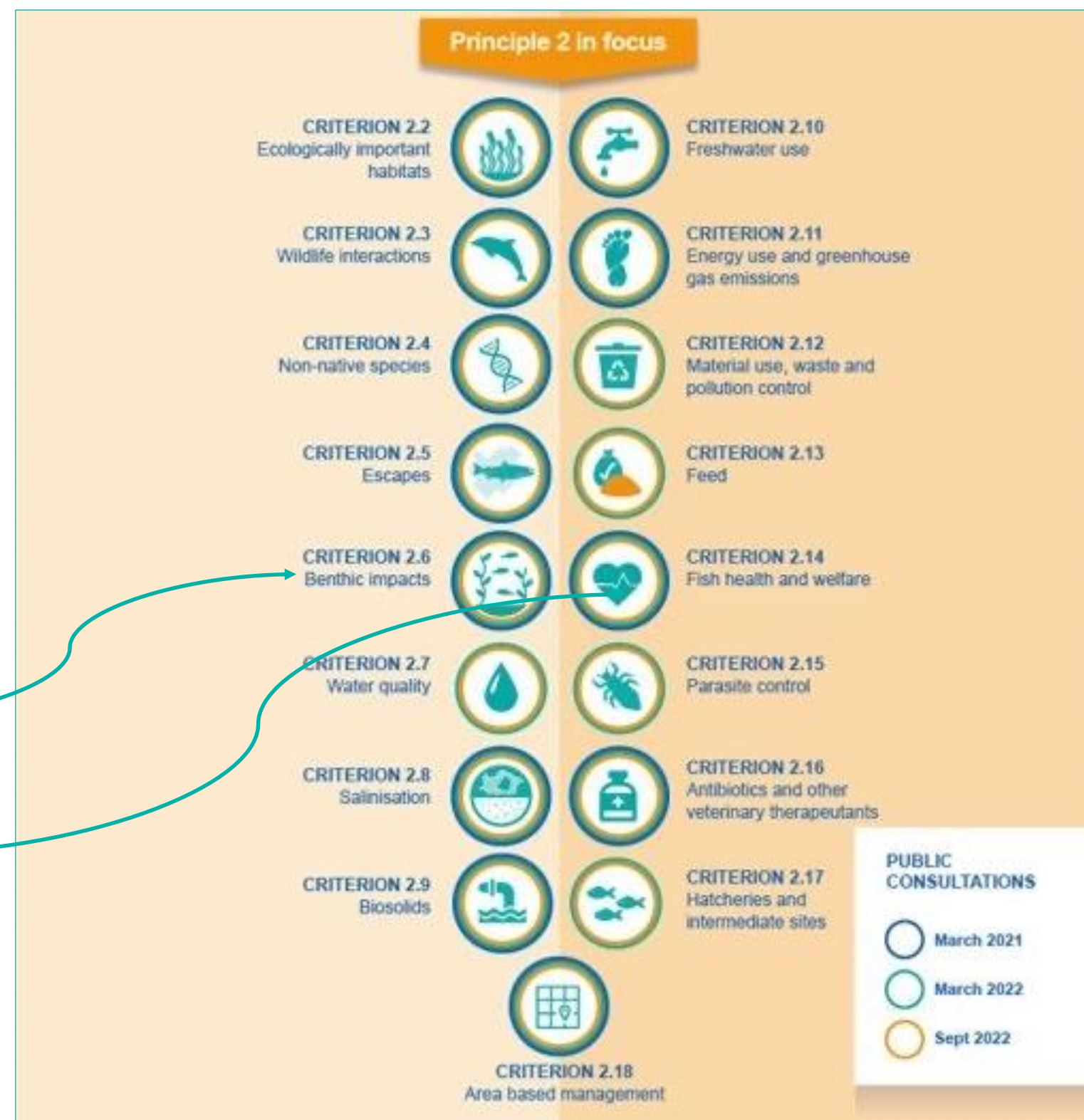
- All production systems and species
- Maintaining key impacts
- Improve consistency
- Increase clarity
- Enable addition of new species

ASC Farm standard

Work in progress, release planned for Q2 2024

Next steps

- **Public Consultation**, from 1 September to 31 October 2022
- Criterion 2.6 – Benthic Impacts
- Criterion 2.14a-c – Fish Health and Welfare
- **Pilot testing** December 2022 to Feb 2023, all normative documents



Public consultation 1 September to 31 October



2.6 Benthic Impacts

Applicable for cage culture regardless of species

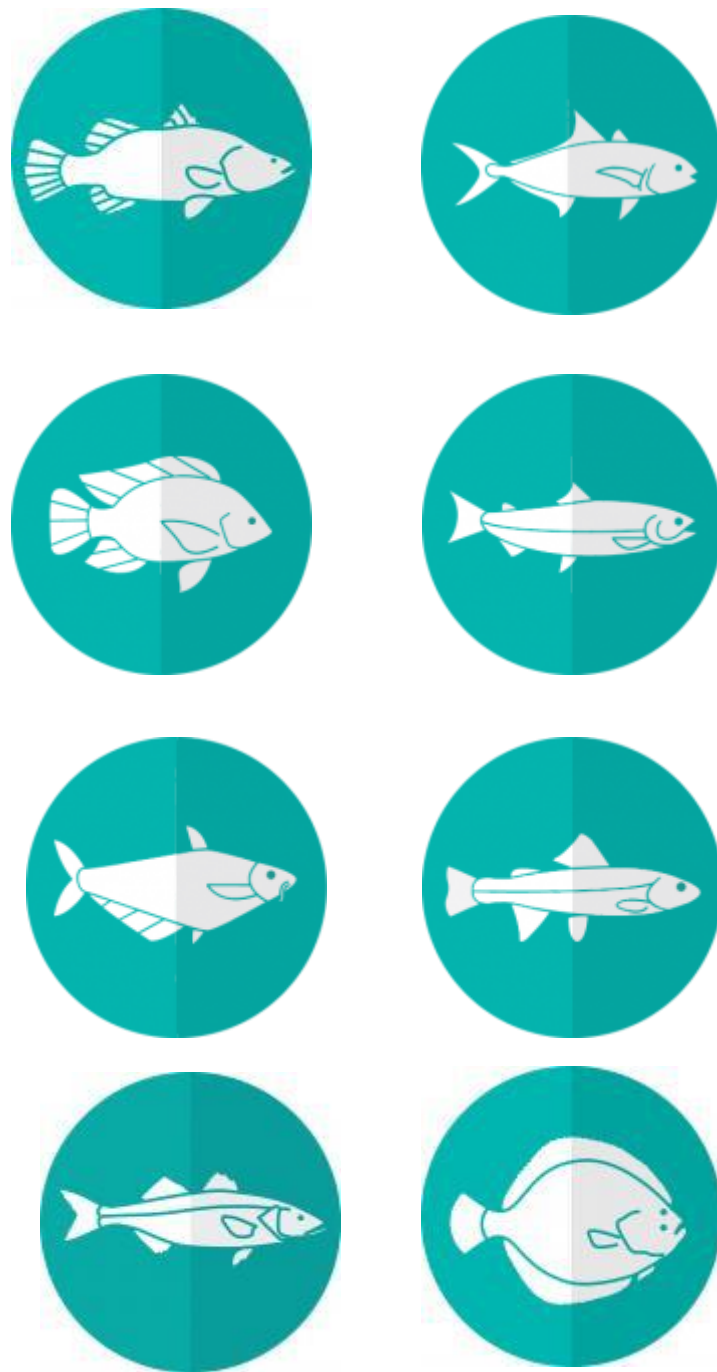
- Utilizes EQS and a step-wise approach
- Developed though TWG process with public consultation

Program	Description	Indicators	Locations
Tier 1	Rapid Screening: Low-cost farm impact screening using practical, near-real-time abiotic measurements to determine the risk for organic enrichment impacts.	S^{2-} and Eh	30,100 150 and 500 m distances in predominant current direction.
Tier 2	Impact delineation: Enhanced spatial analysis of abiotic impacts around the farm using practical monitoring tools.	S^{2-} and Eh	Same as Tier 1 but including sampling in three additional directions.
Tier 3	Biotic impact: Comprehensive characterization of biotic impacts around the farm.	3 biotic metrics from Table 2	Same locations as Tier 1 and Tier 2

Public consultation 1 September to 31 October

2.14a-c Fish health and welfare

Initial focus on finfish species



- Fish Health and Welfare management systems required for all specie, incl. veterinary oversight
- Selection of issues: based on relevance, scientific knowledge available, and applicability to commercial farming
- Issues:
 - a) Operational running of a farm
 - b) Handling
 - c) Stunning and slaughter

Take-aways update



Update - ASC Certification Programme

Continuous development and improvement

Take aways

- 1) Major improvements to strengthen standards and assurance documents and tools
Farm, feed mill and for supply chain companies
- 2) Consumers, retailers and brands are seeking confidence in their buying behavior
Growing interest in US market, Italy and Spain, China and Japan
- 3) High-level overview: additional training and support is possible

Thank you

Questions?



Esther Luiten, Global Commercial Director

- Esther.Luiten@asc-aqua.org
- +31 6 31 92 86 91

Salmon Farming, Chile

Thank you

Aquaculture Stewardship Council
www.asc-aqua.org

